

## Assistance & Support

### Older Adult Services

### Outreach



### Community Programming

### Social Work Services

### Volunteer Opportunities



Jewish Family Services (JFS) is dedicated to promoting the well-being of all those in the community who require support and services within a Jewish context.

Whether you are a family of one or many, with children or without, just starting out or approaching the end of your journey, JFS is here to help you navigate life's challenges.



JFS: For the Life of Your Family  
[www.RaleighCaryJFS.org](http://www.RaleighCaryJFS.org)

## Connecting, Providing, Caring for Our Jewish Community

Guided by the wisdom and values of Jewish Tradition, Raleigh-Cary Jewish Family Services offers compassionate and affordable social services and programs to empower families and individuals of all ages to maximize the quality of their lives and reach their full potential with dignity, hope, and strength.

At Raleigh-Cary JFS, our vision is to build a collaborative community that enriches and supports the lives of individuals and families, and empowers them to care for themselves and each other.



Raleigh-Cary Jewish Family Services  
*A beneficiary agency of The Jewish Federation of Raleigh-Cary*  
For additional information contact:

**Raleigh-Cary Jewish Family Services**

8210 Creedmoor Road, Suite 104

Raleigh, NC 27613

919-676-2295

[www.RaleighCaryJFS.org](http://www.RaleighCaryJFS.org)

[JFS@ShalomRaleigh.org](mailto:JFS@ShalomRaleigh.org)

## Social Work Services

### Clinical Counseling and Therapy

Licensed clinical social workers provide clinical counseling and therapy on an affordable sliding scale to individuals through all stages of life.

### Case Management

JFS provides professional, affordable, and compassionate case management services to adults, families, caregivers, and older adults. Case management for older adults is also offered in New Bern, NC.

## Assistance & Support

### Food Assistance

Our Food Pantry offers non-perishable kosher and non-kosher items and a limited amount of personal hygiene & toiletry items.

JFS also assists Jewish individuals and families with Mitzvah Meals – kosher-style prepared meals delivered monthly and on certain holidays.

### Emergency Financial Assistance

JFS provides short-term emergency financial aid for Jewish individuals and families who are in a financial crisis. JFS assists with emergencies such as utility shut-offs, medical bills, late rent, eviction, etc.

### Jewish Burial Assistance

JFS provides Jewish burial information and referrals to those who are not affiliated with a synagogue. In limited cases, JFS can help with Jewish burial expenses.

### Jewish Educational Loan Fund (JELF)

JFS is the local administrator for JELF. JELF grants interest-free loans to Jewish students from NC for post-secondary study. JELF's loans are "last dollar", supplying the final funds that a student needs.

Learn more at [www.JELF.org](http://www.JELF.org)



## Older Adult Services

### Transportation

JFSGO provides volunteer and contracted professional door-to-door transportation for qualifying Jewish older adults to events, medical appointments, and other approved errands.

*Case Management for Older Adults and JFSGO are funded in part by The Carolina Foundation for Jewish Seniors.*

### Holocaust Survivors

JFS is proud to take part in the KAVOD SHEF initiative, providing emergency financial assistance for Holocaust survivors in the Wake County community.

### Friendly and Shabbat Visiting

Friendly visitors are matched with home-bound, isolated seniors and build relationships through crafts, games and conversation. The Shabbat Visiting program matches an older adult with a volunteer who provides an in-home abbreviated Shabbat service. This provides a connection to the Jewish community and the friendly companionship of a JFS volunteer.

### Programs and Services at Senior Living Communities

JFS volunteers lead Shabbat services in a variety of senior communities on a monthly basis as well as special holiday programming.

## Outreach & Community Programming

### Community Events and Programs

Our workshops and programs cater to populations of all ages and stages of life. Along with topics related to parenting, mental health and well-being, and older adult issues, we organize and coordinate programs relating to the entire community on social action, volunteerism and more.

### Good Deeds Day

JFS plans and coordinates volunteer projects for the entire community to take part in during this international day of volunteerism.

### Holiday Outreach

JFS coordinates several Holiday and Shabbat outreach efforts to provide the experience and opportunity of Jewish traditions to families and individuals in need when they may not be able to take part in the greater community. Whether they are home bound, isolated or have a financial need, JFS is here to provide the Jewish connection. Among these efforts are catered Kosher-style Shabbat and holiday meals, a Chanukkah Gift Drive, Passover bags and more.

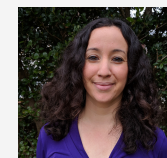
## Volunteer Opportunities

Volunteers are involved with many aspects of JFS including becoming a friendly visitor to an isolated older adult, delivering a Mitzvah Meal to a family in need, stocking the food pantry, and assisting with community-wide events, etc.

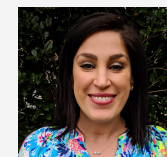
**For additional information contact:**

**[JFS@ShalomRaleigh.org](mailto:JFS@ShalomRaleigh.org)  
[www.RaleighCaryJFS.org](http://www.RaleighCaryJFS.org)**

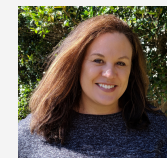
## Professional Staff



**Limor Schwartz, MSW, LCSW**  
**Director of JFS**  
(919) 676-2295x120  
[Limor.Schwartz@ShalomRaleigh.org](mailto:Limor.Schwartz@ShalomRaleigh.org)



**Ilene Mlot**  
**Office Administrator**  
(919) 676-2295 x112  
[Ilene.Mlot@ShalomRaleigh.org](mailto:Ilene.Mlot@ShalomRaleigh.org)



**Carla Huff, MEd, MSW, LCSWA**  
**JFS Therapist**  
(919) 676-2295 x123  
[Carla.Huff@ShalomRaleigh.org](mailto:Carla.Huff@ShalomRaleigh.org)



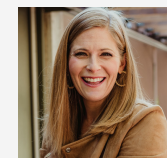
**Tracy Jacobsen**  
**Volunteer Coordinator**  
(919) 676-2295 x124  
[Tracy.Bennett@ShalomRaleigh.org](mailto:Tracy.Bennett@ShalomRaleigh.org)



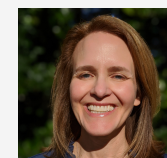
**Barbara Kayman, MA, RDT**  
**Kesher Coordinator**  
(919) 676-2295 x122  
[Barbara.Kayman@ShalomRaleigh.org](mailto:Barbara.Kayman@ShalomRaleigh.org)



**Abby Palmer, MSW**  
**Senior Services Social Worker**  
(919) 676-2295 x123  
[Abby.Palmer@ShalomRaleigh.org](mailto:Abby.Palmer@ShalomRaleigh.org)



**Lauren Primato, MSW**  
**Case Manager**  
(919) 676-2295 x113  
[Lauren.Primato@ShalomRaleigh.org](mailto:Lauren.Primato@ShalomRaleigh.org)



**Dina W. Stambler, MSW**  
**Outreach & Program Coordinator**  
(919) 676-2295 x129  
[Dina.Stambler@ShalomRaleigh.org](mailto:Dina.Stambler@ShalomRaleigh.org)